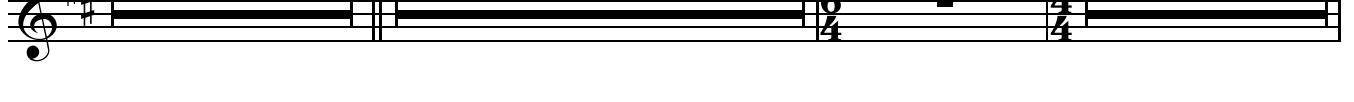
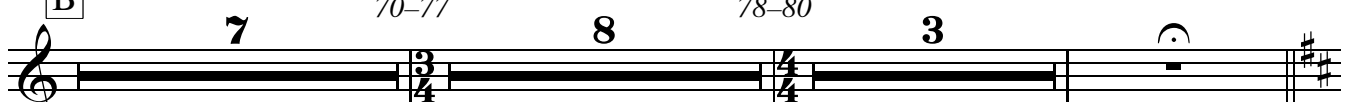
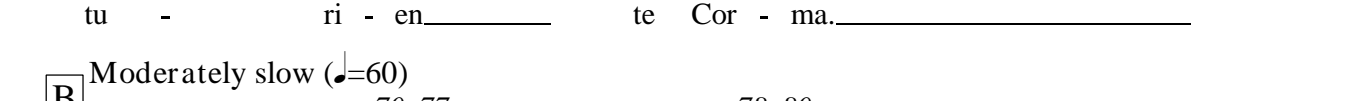
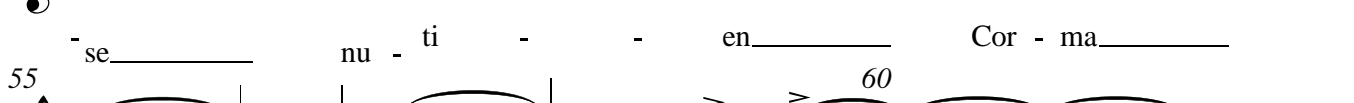
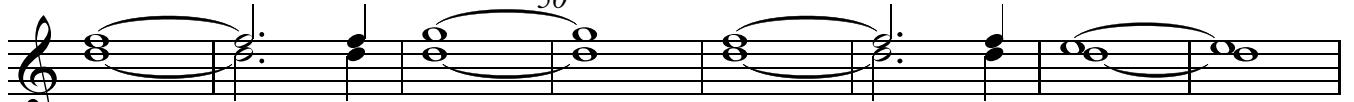
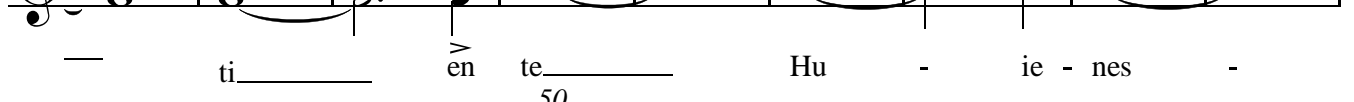
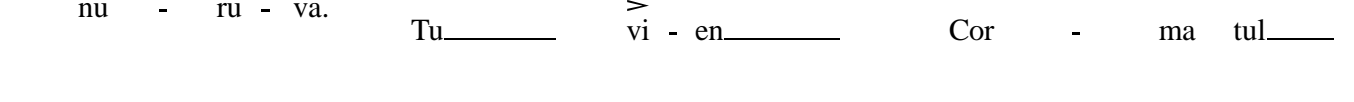
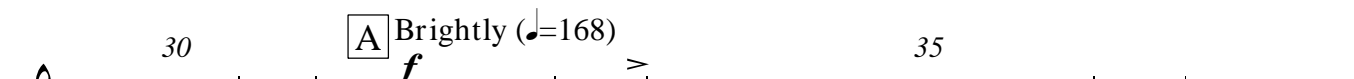
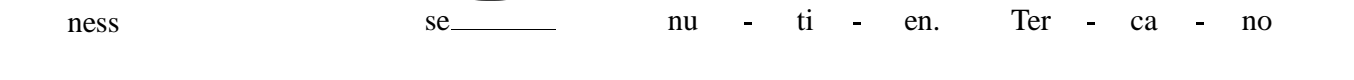
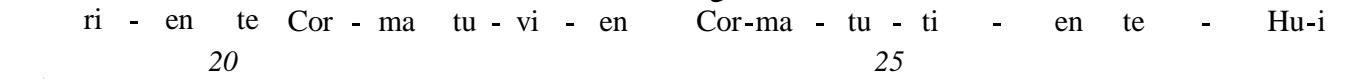
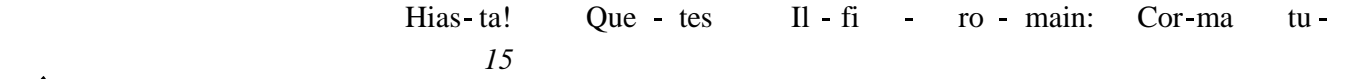
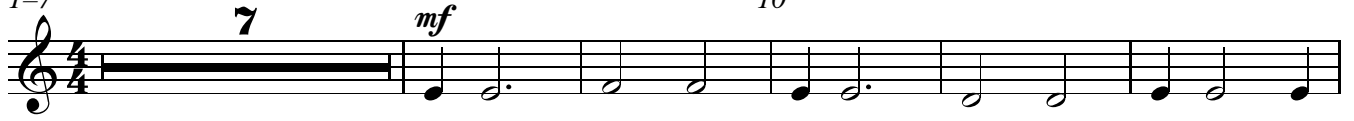


The Lord Of The Rings

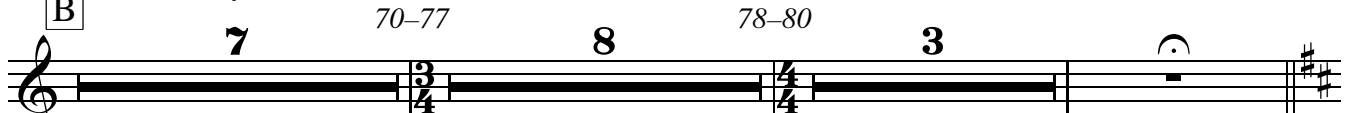
Soprano

1. The Prophecy.

1-7 Slowly, darkly (♩=70)

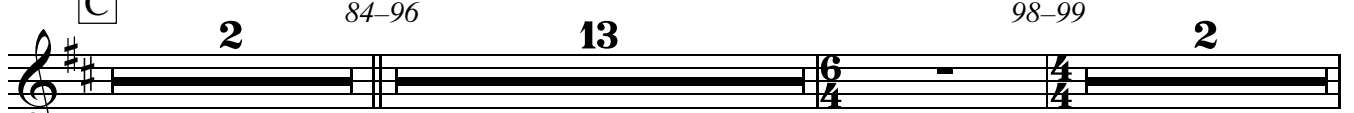


B Moderately slow (♩=60)



2. Concerning Hobbits.

C Moderately (♩=110)



D **15** **E** **Meno mosso** **8** *rall.*

Musical staff for '3. The Black Rider'. It begins with a treble clef and a key signature of two sharps (F# and C#). The first measure is marked with a box containing 'D' and a measure rest of 15. The second measure is marked with a box containing 'E', the tempo marking 'Meno mosso', and a measure rest of 8. The piece concludes with a fermata over a whole note and a double bar line.

3. The Black Rider

Misteriously, with intensity (♩=160)

F **31** **12** **2**

125-155 169-170

Musical staff for '4. Many Meetings'. It starts with a treble clef and a key signature of two sharps. The first measure is marked with a box containing 'F', a measure rest of 31, and the measure number '125-155'. The second measure is marked with a measure rest of 12 and the measure number '169-170'. The piece ends with a measure rest of 2, a fermata, and a double bar line.

4. Many Meetings

Slowly, flowing (♩=80)

G **24** **12**

195

Musical staff for '5. May It Be'. It begins with a treble clef and a key signature of two sharps. The first measure is marked with a box containing 'G', a measure rest of 24, and the measure number '195'. The second measure is marked with a measure rest of 12. The piece concludes with a fermata and a double bar line.

5. May It Be

Slowly and freely (♩=70)

I **12** **J** **14** **3**

248-249 250-251 253-255

Musical staff for '5. May It Be'. It starts with a treble clef and a key signature of two sharps. The first measure is marked with a box containing 'I', a measure rest of 12, and the measure number '248-249'. The second measure is marked with a box containing 'J', a measure rest of 14, and the measure number '250-251'. The piece ends with a measure rest of 3, a fermata, and a double bar line.

K Ah! - - 265 - -

258-259 260

mp

Musical staff for '5. May It Be'. It begins with a treble clef and a key signature of two sharps. The first measure is marked with a box containing 'K', the text 'Ah!', and the measure number '258-259'. The second measure is marked with the measure number '260'. The piece continues with a series of notes and rests, ending with a fermata and a double bar line. The dynamic marking 'mp' is placed below the staff.

270 275

Musical staff for '5. May It Be'. It continues the piece with a series of notes and rests, ending with a fermata and a double bar line.

-1. - - 2. -280 - -

Musical staff for '5. May It Be'. It shows the first and second endings of the piece. The first ending is marked with a box containing '-1.' and the second ending is marked with a box containing '2. -280'. The piece concludes with a fermata and a double bar line.

Soprano
6. Rohan

L

4 9 289-297 299-301 3

M

4 20 325

Moderately (♩=92)

7. Into the West

N

4 16

347-358 12 360 O

What can you see on the ho - ri - zon? Why do the

365 O 360

white gulls call? _____ A-cross the sea, a pale moon

370 O 360

ri - ses. The ships have come to car - ry you home. _____

375 O 380

Ah. _____ Ah. _____ Ah. _____ Ah. _____

p

P 20 380

Soprano

Q

405



What can you see on the ho - ri - zon? Why do the white gulls call?—

410

415

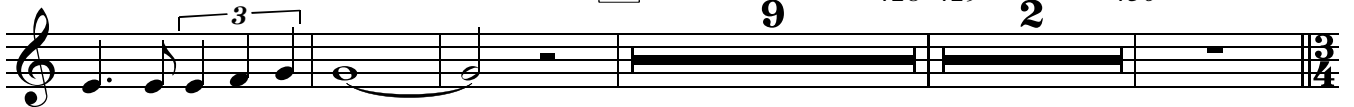


— A-cross the sea, a pale moon ri - ses. The ships have poco rall. . .

R

428-429

430



come to car-ry you home.——

431-438 Moderately (♩=76)

8

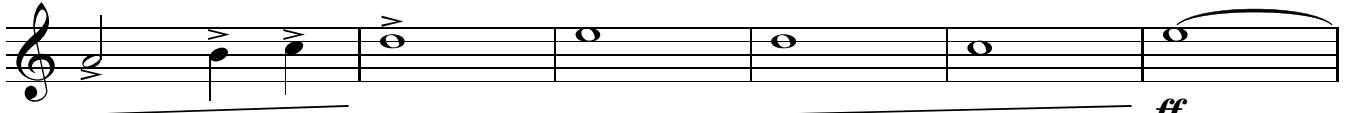
439-448

10



Ah!

450



455 -

456-457

2

molto rit.

460

